



Built for Real American Muscle™



WWW.CRAGARWHEEL.COM



The American Muscle Icon Began Here

Since the 1960s, Cragar Wheels have been a staple in the custom wheel industry. We have withstood the test of time and are among the most respected brands in the street rod, street machine and performance racing circles. With an ever expanding product portfolio of aluminum and steel wheels, Cragar wheels continue to set the standard for quality. Every wheel is manufactured with the same care and commitment to excellence that has made Cragar Wheels a constant driving force in the automotive aftermarket.

S/S

Known as The Original Muscle Car Wheel, the S/S line is our most popular custom wheel design. Since its creation by Roy Richter in the 1960s, its iconic style revolutionized the wheel industry. These unique, timeless wheels are the classics that started it all.



SERIES 61C S/S 17"

2-Piece Composite
5-Spoke
Conical Seat Lugs
Cap Included

*Lug nuts not included

SIZING

17 x 7
17 x 8
17 x 9

SERIES 08/61

2-Piece Composite
5-Spoke
Cap Included
Shank Style Lugs

*Lug nuts not included

SIZING

14 x 6 15 x 7
14 x 7 15 x 8
14 x 8 15 x 10
15 x 4.5 15 x 12
15 x 6 15 x 14

SERIES 61G S/S

2-Piece Composite
5-Spoke
Conical Seat Lugs
Cap Included

*Lug nuts not included

SIZING

15 x 6 17 x 7
15 x 7 17 x 8
15 x 8 17 x 9
15 x 10
15 x 12
15 x 14

OPPOSITE PAGE

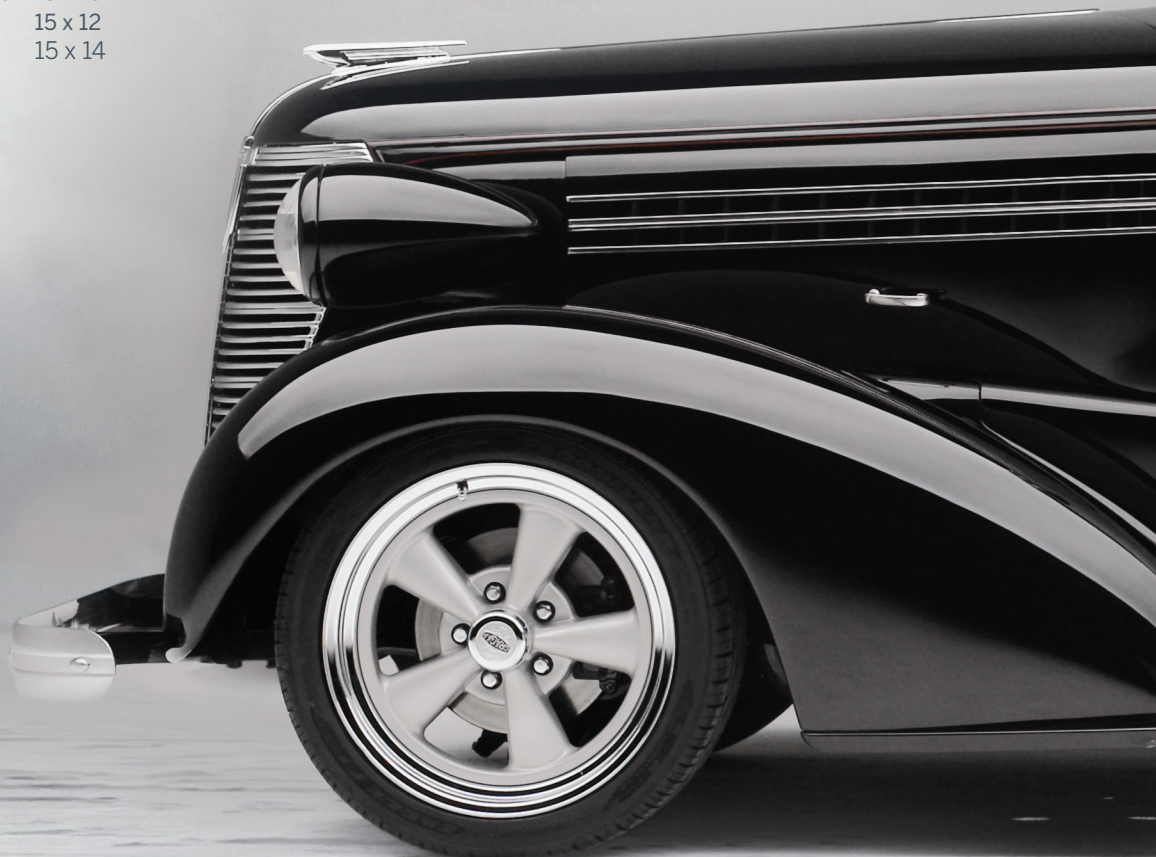
SERIES 61C S/S

2-Piece Composite
5-Spoke
Conical Seat Lugs
Cap Included

*Lug nuts not included

SIZING

15 x 4.5 15 x 10
15 x 6 15 x 12
15 x 7 15 x 14
15 x 8



Modern Muscle

Inspired by its past, our Modern Muscle Wheels embody the spirit of street racing and unmatched performance. Built around passion, personality, and prestige, these hot rods celebrate a Cragar tradition that enthusiasts know and love.



SERIES 614 S/S - 1 PIECE

Chrome
Cast Aluminum
Conical Seat Lugs
Cap Included

*Lug nuts not included

SIZING

18 x 8
20 x 8.5
20 x 10



SERIES 615 - 1 PIECE

Black with Machined Accents
Cast Aluminum
Conical Seat Lugs
Cap Included

*Lug nuts not included

SIZING

18 x 8
20 x 8.5
20 x 10



SERIES 620

Black with Machined Face
Cast Aluminum
Conical Seat Lugs
Cap Included

*Lug nuts not included

SIZING

20 x 8.5
20 x 10
22 x 9



SERIES 620

Black with Machined Accents
Cast Aluminum
Conical Seat Lugs
Cap Included

*Lug nuts not included

SIZING

20 x 8.5
20 x 10
22 x 9



SERIES 617C - 1 PIECE

Chrome
Cast Aluminum
Conical Seat Lug
Cap Included

*Lug nuts not included

SIZING

18 x 8
20 x 8.5
20 x 10



SERIES 617B - 1 PIECE

Matte Black
Cast Aluminum
Conical Seat Lugs
Cap Included

*Lug nuts not included

SIZING

18 x 8
20 x 8.5
20 x 10



Vintage

These wheels create an old fashion, yet timeless feel for fanatics. Pristine in detail, our Mag wheels are perpetual products that serve every enthusiast with taste and experience.



**SERIES 32
KEYSTONE KLASSIC**
2-Piece Composite
Black Accents
Cap Included

SIZING
15 x 4.5 15 x 8
15 x 5 15 x 10
15 x 6 15 x 12
15 x 7 15 x 14

*Lug nuts not included



SERIES 390C
2-Piece Composite
Spinner Included
Lug Cover Included
Cap Included

SIZING
15 x 6
15 x 7
15 x 8
15 x 10

*Lug nuts not included



SERIES 610C RWD
Mag Chrome GT
1-Piece Cast Aluminum
Cap Included

SIZING
15 x 7 18 x 7
15 x 8 18 x 8
17 x 7
17 x 8

*Lug nuts not included



SERIES 610G RWD
Mag Gray GT
1-Piece Cast Aluminum
Cap Included

SIZING
15 x 7
15 x 8
17 x 7
17 x 8
18 x 7
18 x 8

*Lug nuts not included

SERIES 510 MAGNUM
2-Piece Composite
Black Accents
Cap Included

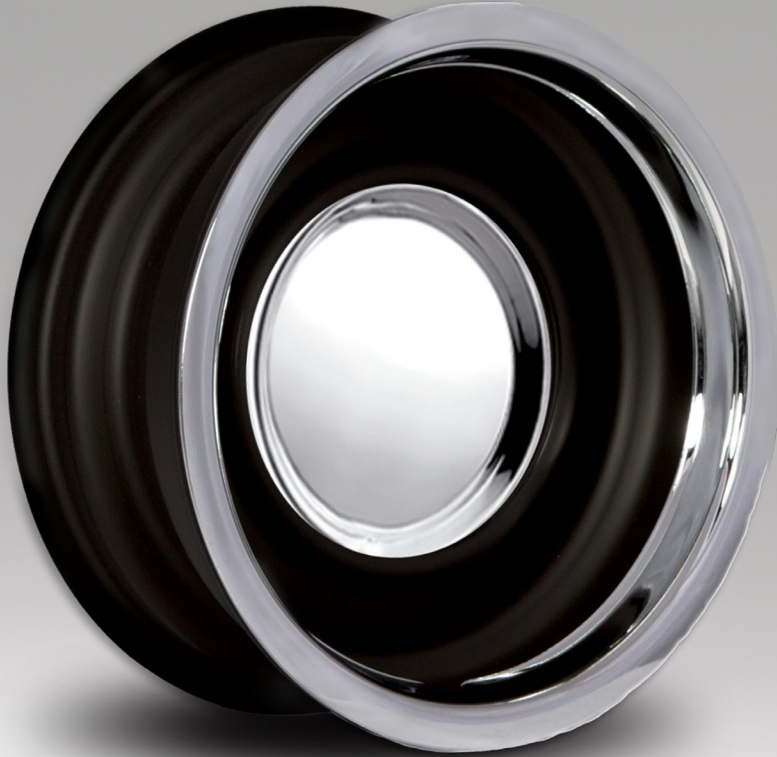
SIZING
14 x 6
14 x 7
15 x 6
15 x 7
15 x 8
15 x 10

*Lug nuts not included



Steel

Nothing beats the look of a set of steel wheels for your restored classic, muscle car or hot rod. Flexible in design with durable body and strength, these wheels deliver all elements of style and build.



**SERIES 397 STEEL
SOFT EIGHT**

2-Piece Gloss Black
Powder Coated

*Cap and lug nuts
not included

SIZING

15 x 7	16 x 7
15 x 8	16 x 8
15 x 10	16 x 10
15 x 12	17 x 8
15 x 14	17 x 9



SERIES 373 CHROME RALLY

2-Piece Steel
Chrome Plated
Cap Included

*Lug nuts not included

SIZING

15 x 6
15 x 7
15 x 8
15 x 10

*Series 313 Smoothie (pictured). Custom colors available on select styles, contact your local dealer for details.



SERIES 323 VEGAS

2-piece Steel
Chrome Plated

*Cap and lug nuts
shown not included

SIZING

15 x 6
15 x 7
15 x 8
15 x 10



**SERIES 342 STEEL
"D" WINDOW**

2-Piece Steel
Gloss Black
Painted with Red
and Blue Stripe

*Cap and lug nuts
not included

SIZING

15 x 7	16 x 7
15 x 8	16 x 8
15 x 10	16 x 10
15 x 12	17 x 8
15 x 14	17 x 9



SERIES 365 V-5 STEEL

5-Spoke
2-Piece Gloss Black
Powder Coated

*Cap and lug nuts
nut included

SIZING

15 x 7
15 x 8
15 x 10
16 x 7
16 x 8



**SERIES 398 STEEL
CHROME SOFT EIGHT**

SIZING

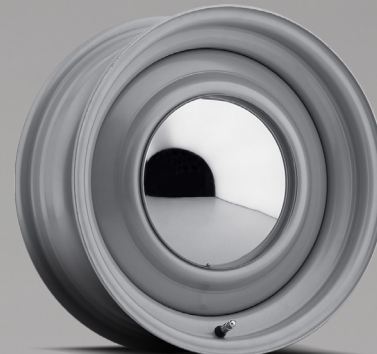
Conical Seat Lugs	15 x 7	16 x 8
2-Piece Steel	15 x 8	16 x 10
	15 x 10	17 x 8
*Cap and lug nuts not included	16 x 7	17 x 9



SERIES 344 BLACK RALLY

SIZING

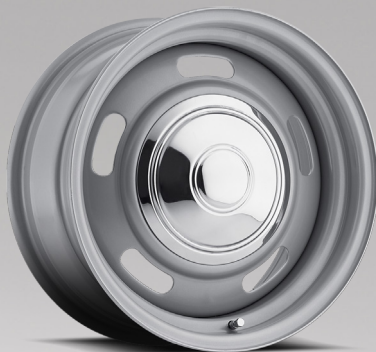
Black Powder Coated	15 x 6
2-Piece Steel	15 x 7
	15 x 8
*Cap, lug nuts and trim ring shown not included	15 x 10



**SERIES 313
SMOOTHIE SILVER**

SIZING

2-Piece Steel	14 x 6	15 x 6
Powder Coated	14 x 7	15 x 7
Cap Included		15 x 8
		15 x 10



**SERIES 344
SILVER RALLY**

SIZING

2-Piece Steel	14 x 6	15 x 7
Powder Coated	14 x 7	15 x 8
*Cap not included	15 x 6	15 x 10



SERIES 69 DELUX

SIZING

2-Piece Gloss Black Powder Coated	15 x 4.5	15 x 8
	15 x 5	15 x 10
*Cap and lug nuts not included	15 x 6	15 x 12
	15 x 7	15 x 14



**SERIES 313
SMOOTHIE**

SIZING

2-Piece Steel	14 x 6	15 x 6
Chrome Plated	14 x 7	15 x 7
Includes Cap		15 x 8
		15 x 10





Cragar, the Cragar S/S, Keystone Klassic and other associated marks are registered trademarks of The Carlstar Group LLC.

© 2016 The Carlstar Group, LLC. All rights reserved.
Revision 08/16. Part # CGR-L-1617.

The marks appearing in this catalog including, but not limited to: Ford, Chevrolet and Dodge; and their respective logos, emblems, slogans and vehicle model names and body designs; are trademarks and/or service marks of GM, its subsidiaries, affiliates or licensors.

WWW.CRAGARWHEEL.COM